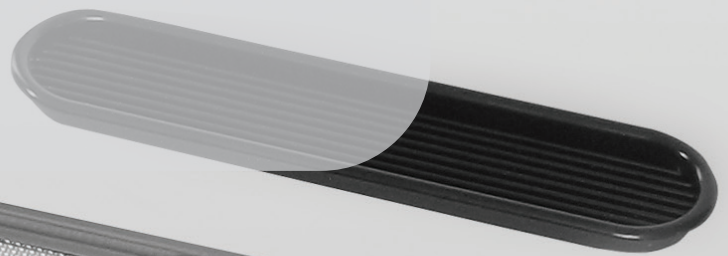
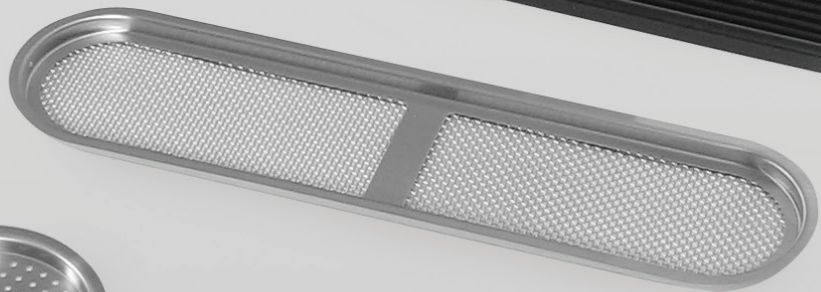




MISCELLANEOUS

CABLE GROMMETS
VENTILATORS
BATHROOM ACCESSORIES
MULTI-PURPOSE DOORS, LIDS
TOWEL BARS, RACKS



VENTILATORS

Picture	Item No.		Page
	SAM (FINE MESH)	 	636
	SAD (FINE MESH)	 	636
	ASM	 	636
	ASD	 	637
	AST	 	637
	AST-160, 210	 	637
	1-1122		638
	1-1212		638
	1-2211		639
	1-2222		639
	APK, APKL		640
	APD, APDL		640
	APD-KH		641
	APM		642
	APB		642

CABLE GROMMETS

Picture	Item No.		Page
	S445, S51, S60, S76, S89		643
	S165-76		643
	V60, V80		644
	V2000		644
	LSU, LS		645
	CHC		645
	LN72D		646
	LN72S		646

BATHROOM ACCESSORIES

Picture	Item No.	Page
	ZL-3201 (TOWEL BAR) STAINLESS 316 STEEL	647
	ZL-3202 (TOWEL BAR) STAINLESS 316 STEEL	647
	KB-T (TOWEL BAR) STAINLESS 303 STEEL	648
	DSR-01/18 (TOWEL BAR) STAINLESS 303 STEEL STAINLESS 304 STEEL	648
	DST-06 (TOWEL BAR) STAINLESS 303 STEEL STAINLESS 304 STEEL	649
	DSR-02 (TOWEL BAR) STAINLESS 303 STEEL STAINLESS 304 STEEL	649
	DSR-08 (TOWEL RACK) STAINLESS 303 STEEL STAINLESS 304 STEEL	650
	DSD-80 (TOWEL RACK) STAINLESS 303 STEEL STAINLESS 304 STEEL	650
	DSB-01 (TOILET PAPER HOLDER) STAINLESS 303 STEEL STAINLESS 304 STEEL	651
	DSB-03 (TOILET PAPER HOLDER) STAINLESS 303 STEEL STAINLESS 304 STEEL	651
	DSB-04 (TOILET PAPER HOLDER) STAINLESS 303 STEEL STAINLESS 304 STEEL	651
	DSB-07, 09 (TOILET BRUSH & PAPER HOLDER) STAINLESS 303 STEEL STAINLESS 304 STEEL	652

MULTI-PURPOSE DOORS, LIDS & GROMMETS

Picture	Item No.	Page
	AZ-GD230/HL RoHS compliant STAINLESS 304 STEEL	653
	AZ-SD310/HL RoHS compliant STAINLESS 304 STEEL	653
	AZ-ND230 RoHS compliant STAINLESS 304 STEEL	653
	AZ-HD230/HL STAINLESS 304 STEEL	654
	AZ-HD310/HL STAINLESS 304 STEEL	654
	AZ-DD310/HL STAINLESS 304 STEEL	654
	AN-DH020 STAINLESS 304 STEEL	655
	AN-KH017 STAINLESS 304 STEEL	655
	AD-DH017 STAINLESS 304 STEEL	656
	AD-DH015 STAINLESS 304 STEEL	656
	AN-DH, LH STAINLESS 304 STEEL	657
	AD-KH017 STAINLESS 304 STEEL	657

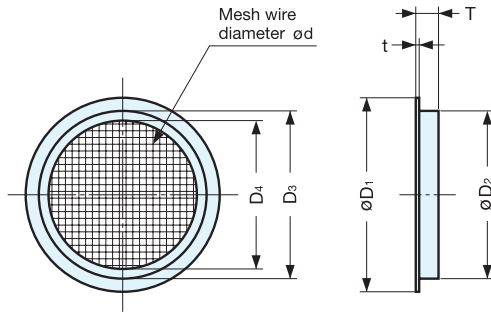
DOOR ACCESSORIES

Picture	Item No.	Details	Page
	LDD-S (DOOR DAMPER) RoHS compliant	Maximum door weight: 88 lbs	200
	LDD-V (DOOR DAMPER) RoHS compliant	Maximum door weight: 88 lbs	202
	ZL-1801 (DOOR STOPPER) RoHS compliant STAINLESS 316 STEEL	-	204
	ZL-1802 (DOOR STOPPER) RoHS compliant STAINLESS 316 STEEL	-	204
	ZL-1803 (DOOR STOPPER) RoHS compliant STAINLESS 316 STEEL	-	204
	HT-32P (DOOR STOPPER) RoHS compliant STAINLESS 304 STEEL	-	205
	DSD (DOOR STOPPER) STAINLESS 303 STEEL STAINLESS 304 STEEL	-	205
	SMDH (DOOR STOPPER)	Magnetic Force: 30.8 lbs	206
	KMDH (DOOR STOPPER)	Magnetic Force: 26.4 lbs	206
	SODH (DOOR HOLDER)	-	206
	JFR (DOOR CLOSER)	Maximum door weight: 176 lbs	207

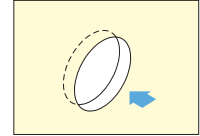
VENTILATOR



SAM



• 0.4 mm mesh wire diameter.



Installation

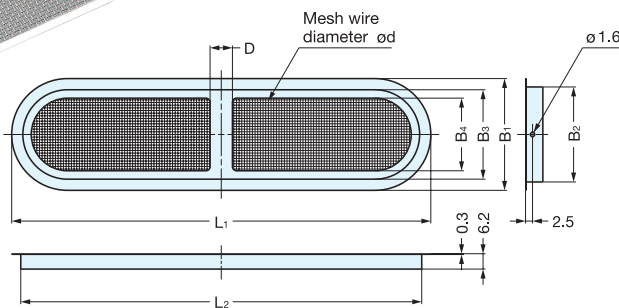
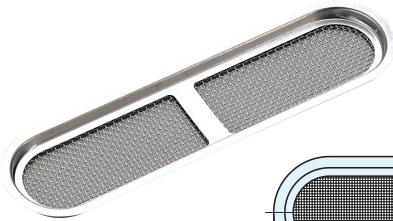
Material	Finish
304 Stainless Steel	Satin

Item No.	D ₁	D ₂	D ₃	D ₄	T	t	d	Weight (g)	Box (pcs)	Carton (pcs)
SAM- 37	36 (1-27/64")	31.5 (1-1/4")	30	25	5.7	0.3	0.4	4.5	70	1400
SAM- 45	46 (1-13/16")	41.5 (1-41/64")	40	35	5.2			6	60	1200
SAM- 60	60 (2-23/64")	53.5 (2-7/64")	52	46	6.0			9.5	50	1000
SAM- 85	85 (3-11/32")	77.8 (3-1/16")	76.5	68	6.2			16.5	30	600
SAM-120	120 (4-23/32")	110.5 (4-23/64")	108	99	7.2	0.5		46.5	20	200

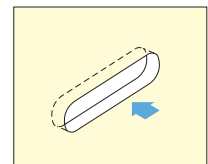
VENTILATOR



SAD



• 0.4 mm mesh wire diameter.



Installation

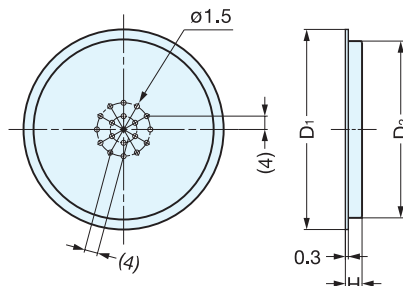
Material	Finish
304 Stainless Steel	Satin

Item No.	L ₁	B ₁	B ₃	B ₄	L ₂	B ₂	D	d	Weight (g)	Box (pcs)	Carton (pcs)
SAD-150	150 (5-29/32")	40 (1-37/64")	32	26	143.5	34	8	0.4	18.5	30	600
SAD-200	200.5 (7-57/64")	50 (1-31/32")	42	35	194	44	10		30		300

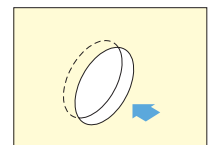
VENTILATOR



ASM



• 1.5 mm (1/16") diameter holes.



Installation

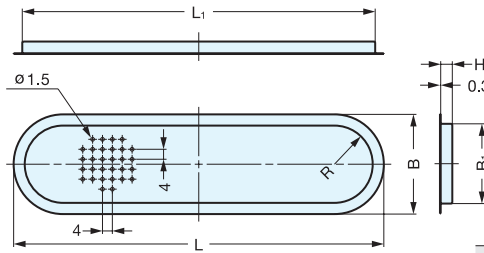
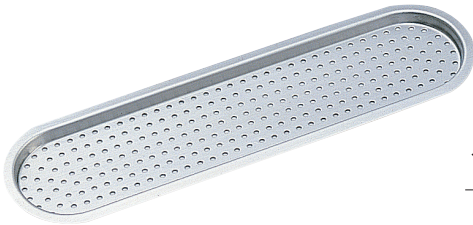
Material	Finish
304 Stainless Steel	Satin

Item No.	D ₁	D ₂	H	Holes	Weight (g)	Box (pcs)	Carton (pcs)
ASM-37	36 (1-27/64")	31 (1-7/32")	4.5	37	3	100	3600
ASM-45	46 (1-13/16")	41 (1-39/64")		59	5		
ASM-60	60 (2-23/64")	53 (2-3/32")	5	127	8		
ASM-85	85 (3-11/32")	77 (3-1/32")		271	13.5	50	1000

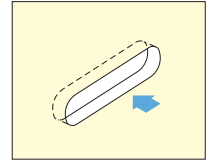
VENTILATOR



ASD



- 1.5 mm (1/16") diameter holes.



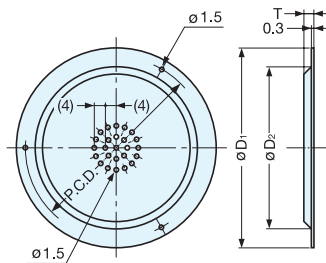
Material	Finish
304 Stainless Steel	Satin

Item No.	L	L ₁	H	B	B ₁	R	Holes	Weight (g)	Box (pcs)	Carton (pcs)
ASD-150	150 (5-29/32")	143	5	40 (1-37/64")	33	16	268	14.5	80	1920
ASD-200	200 (7-7/8")	193		50 (1-31/32")	42.8	21	450	23	40	960

VENTILATOR



AST



- 1.5 mm (1/16") diameter holes.
- Supplied with tacks.

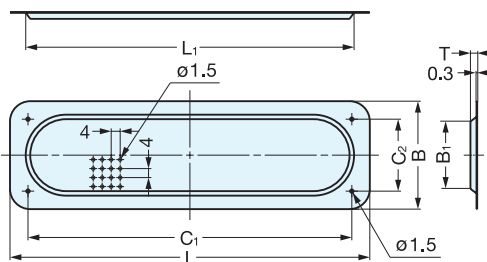
Material	Finish
304 Stainless Steel	Satin

Item No.	D ₁	D ₂	T	P.C.D.	Holes	Weight (g)	Box (pcs)	Carton (pcs)
AST-45	45 (1-25/32")	34 (1-11/32")	3	40	37	4	100	3600
AST-55	55 (2-5/32")	44 (1-47/64")		50	59	5		
AST-70	70 (2-3/4")	55 (2-5/32")		64	127	9		
AST-100	100 (3-15/16")	81 (3-3/16")	4	91	271	19	50	500

VENTILATOR



AST-160, 210



- 1.5 mm (1/16") diameter holes.
- Supplied with tacks.

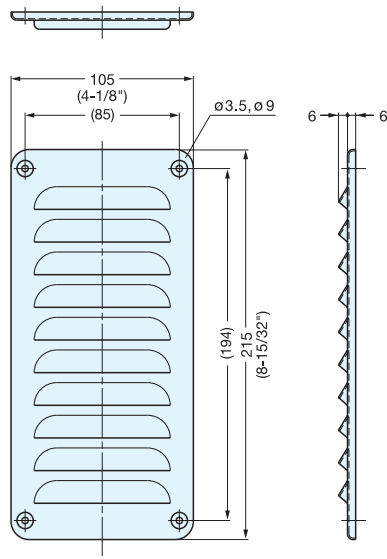
Material	Finish
304 Stainless Steel	Satin

Item No.	L	L ₁	B	B ₁	C ₁	C ₂	T	Holes	Weight (g)	Box (pcs)	Carton (pcs)
AST-160	160 (6-19/64")	146	48 (1-57/64")	36	144	32	3	268	18	50	1000
AST-210	210 (8-17/64")	196	58 (2-9/32")	46	194	42	4	450	28		200

VENTILATOR



1-1122

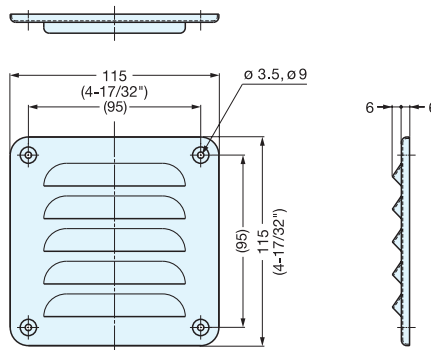


Item No.	Weight (g)	Box (pcs)	Carton (pcs)	Material	Finish
1-1122	165	10	100	316 Stainless Steel	Satin

VENTILATOR



1-1212

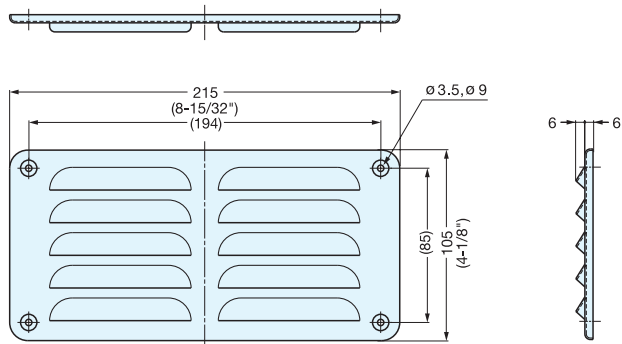


Item No.	Weight (g)	Box (pcs)	Carton (pcs)	Material	Finish
1-1212	165	10	100	316 Stainless Steel	Satin

VENTILATOR



1-2211

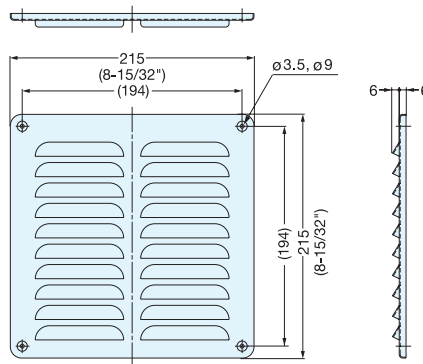


Item No.	Weight (g)	Box (pcs)	Carton (pcs)	Material	Finish
1-2211	165	10	100	316 Stainless Steel	Satin

VENTILATOR



1-2222



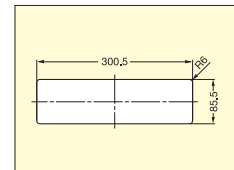
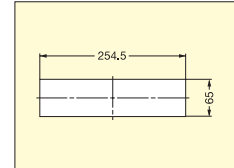
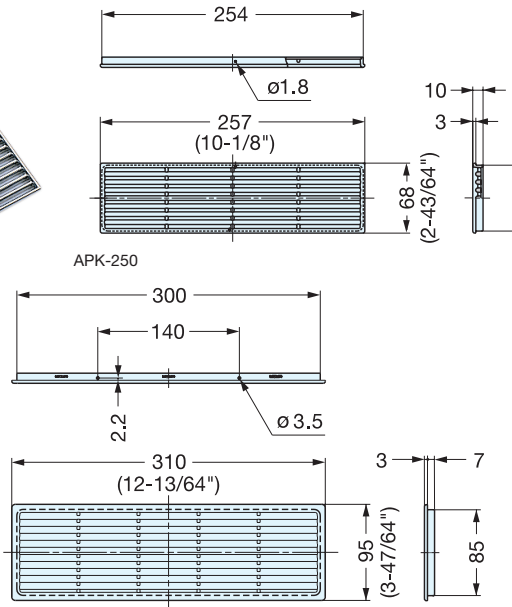
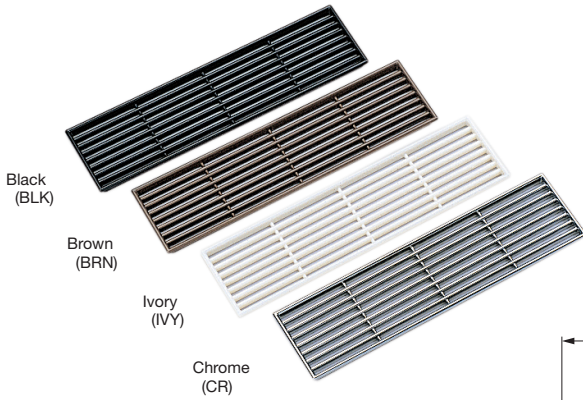
Item No.	Weight (g)	Box (pcs)	Carton (pcs)	Material	Finish
1-2222	295	10	100	316 Stainless Steel	Satin

VENTILATOR



APK, APKL

• ABS ventilator.



APK-250 Cut Out Dimensions

APKL-310 Cut Out Dimensions

Please specify the finish when ordering.

Item No.	Weight (g)	Box (pcs)	Carton (pcs)
APK - 250	57	20	160
APKL - 310	100	10	80

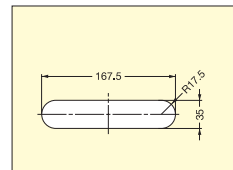
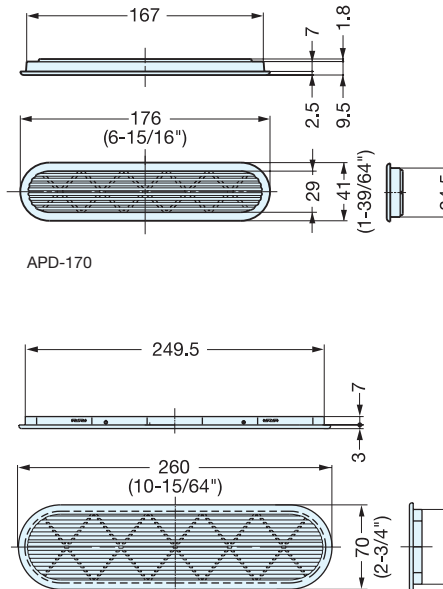
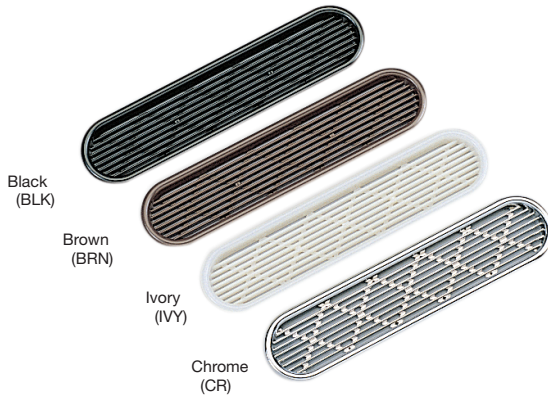
Material	Finish
ABS	Black (BLK), Brown (BRN), Ivory (IVY), Chrome (CR)-APK-250 type only

VENTILATOR

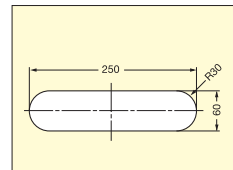


APD, APDL

• ABS ventilator.



APD-170 Cut Out Dimensions



APDL-260 Cut Out Dimensions

Please specify the finish when ordering.

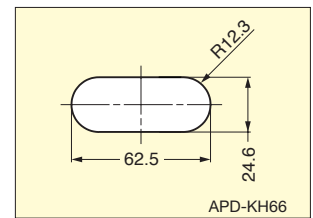
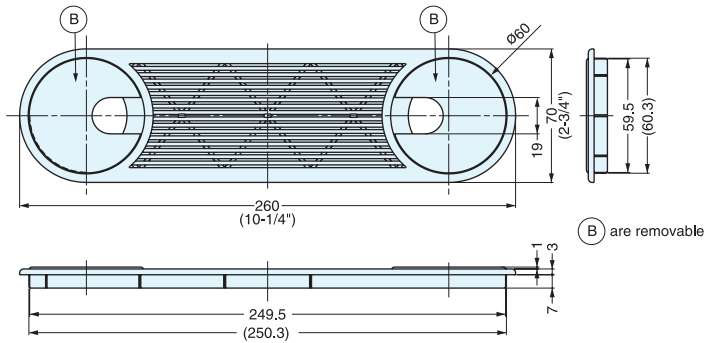
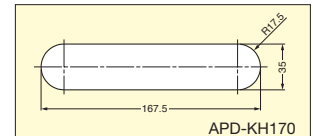
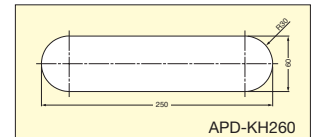
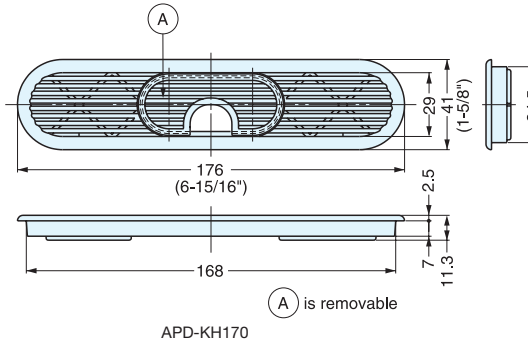
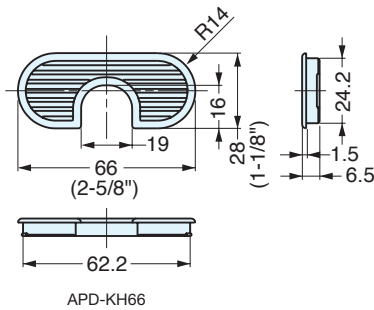
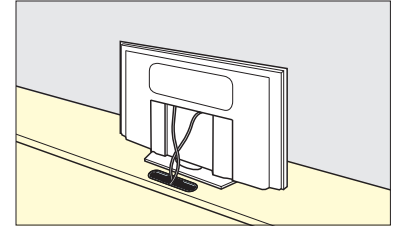
Item No.	Weight (g)	Box (pcs)	Carton (pcs)
APD - 170	22	40	320
APDL - 260	60	10	80

Material	Finish
ABS	Black (BLK), Brown (BRN), Ivory (IVY), Chrome (CR)-APD-170 type only

VENTILATOR

APD-KH

• ABS ventilator.



Cut Out Dimensions

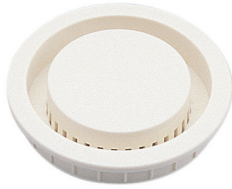
Item No.	Material	Finish	Weight (g)	Box (pcs)	Carton (pcs)
APD-KH66-CR	ABS	Chrome	3.7	100	500
APD-KH66-IV		Ivory	3		
APD-KH66-BL		Black			
APD-KH66-BR		Brown			
APD-KH66-WT		White	24	40	320
APD-KH170-CR		Chrome			
APD-KH170-IV		Ivory			
APD-KH170-BL		Black	20		
APD-KH170-BR		Brown			
APD-KH170-WT		White			
APD-KH260-IV		Ivory	55	10	80
APD-KH260-BL		Black			
APD-KH260-BR		Brown			

VENTILATOR

APM

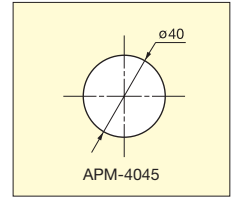
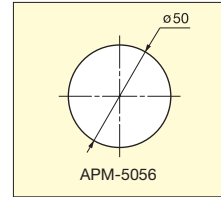


APM-5056/BRN

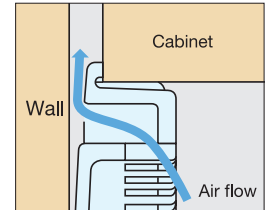
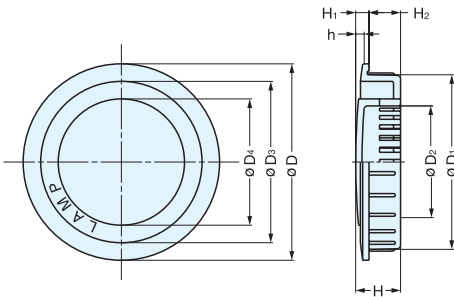


APM-5056/WHT

• Slits for ventilation cannot be seen from outside.



Bore Dimensions



Allows air flow even if the surface of the ventilator is directly on the wall.

Material	Finish
ABS	White (WHT), Brown (BRN)

Please specify the finish when ordering.

Item No.	D	D ₁	D ₂	D ₃	D ₄	H	H ₁	H ₂	h	Bore Dimension	Weight (g)	Box (pcs)	Carton (pcs)
APM-4045	45 (1-25/32")	39.8 (1-9/16")	24.6	36.2	28.2	10.3	3.3	7	1.6	40	5	150	900
APM-5056	56 (2-13/64")	49.8 (1-31/32")	32	46	36	12.8	3.8	9	1.8	50	9	100	600

VENTILATOR

APB



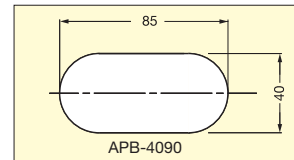
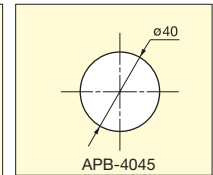
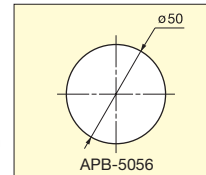
APB-5056/WHT



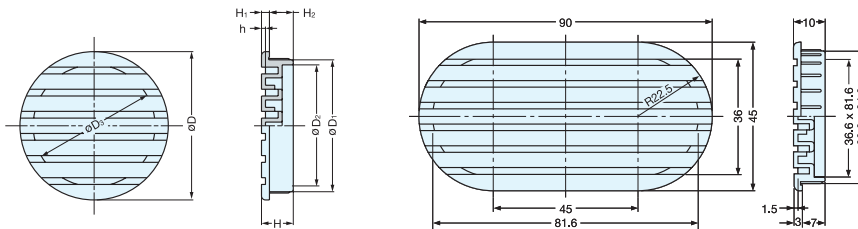
APB-4045/WHT



APB-4090/WHT

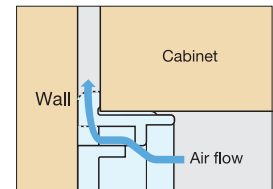


Bore Dimensions



APB-4045, APB-5056

APB-4090



Allows air flow even if the surface of the ventilator is directly on the wall.

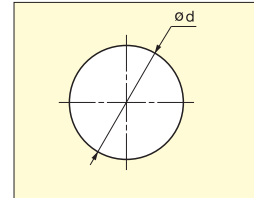
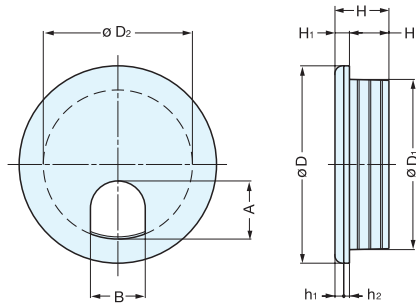
Material	Finish
ABS	White (WHT)

Item No.	D	D ₁	D ₂	D ₃	H	H ₁	H ₂	h	Bore Dimension	Weight (g)	Box (pcs)	Carton (pcs)
APB-4045	45 (1-25/32")	39.8 (1-9/16")	36.6	36.6	10	3	7	1.5	40	7	150	900
APB-5056	56 (2-13/64")	49.8 (1-31/32")	46	46	12	-	9	-	50	11	100	600
APB-4090	-	-	-	-	-	-	-	-	40 x 85	16	80	480

CABLE GROMMET



S445, S51, S60, S76, S89



Bore Dimensions

Material	Finish
ABS	White (WHT), Black (BLK)

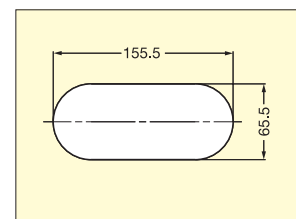
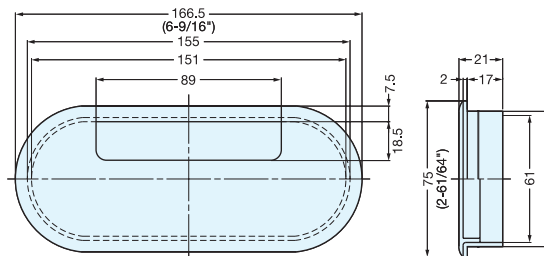
Please specify the finish when ordering.

Item No.	D	D ₁	D ₂	H	H ₁	H ₂	h ₁	h ₂	A	B	d	Weight (g)	Box (pcs)	Carton (pcs)
S445	45 (1-25/32")	38.8 (1-17/32")	34	19.7	3.3	16.4	2	1.3	16.7	12.5	38.5	8.7	100	1200
S 51	51 (2")	44.5 (1-3/4")	39.7	19.9	3.6	16.3		1.6	19	15.5	44.2	11.1		800
S 60	60.5 (2-3/8")	48.8 (1-59/64")	44	19.8		16.2			20.8	19	48.5	13.7		600
S 76	76.5 (3-1/64")	64.4 (2-17/32")	59	20.3	4.2	16.1	2.6		21.5	21.5	64.2	21.8	50	350
S 89	89.4 (3-33/64")	76.5 (3-1/64")	71.4	20.6	4.1	16.5	2.6	1.5	25	22	76.5	30.3		250

CABLE GROMMET



S165-76



Bore Dimensions

Please specify the finish when ordering.

Item No.	Weight (g)	Box (pcs)	Carton (pcs)	Material	Finish
S165-76	47.7	150	1500	ABS	White (WHT), Black (BLK)

CABLE GROMMET



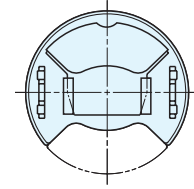
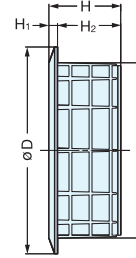
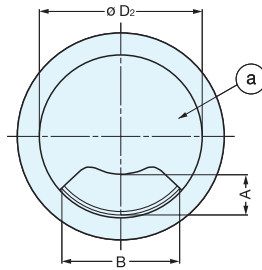
V60, V80



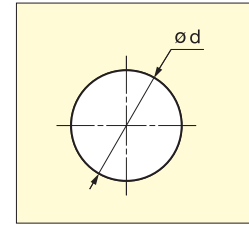
V60/WHT



V60/BLK



Backside of Cap (a)
(When lid open)



Bore Dimensions

Material	Finish
Plastic	White (WHT), Black (BLK)

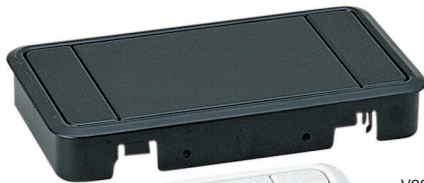
Please specify the finish when ordering.

Item No.	D	D ₁	D ₂	H	H ₁	H ₂	A	B	d	Weight (g)	Box (pcs)	Carton (pcs)
V60	72 (2-27/32")	61 (2-13/32")	56.7	25	3	22	14	41	60.5	26.7	90	900
V80	92 (3-5/8")	80.5 (3-11/64")	77					50	80	37.9	88	880

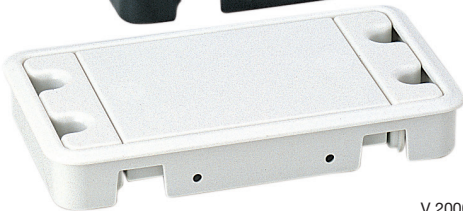
CABLE GROMMET



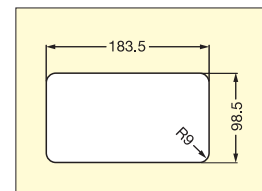
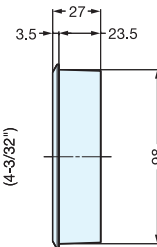
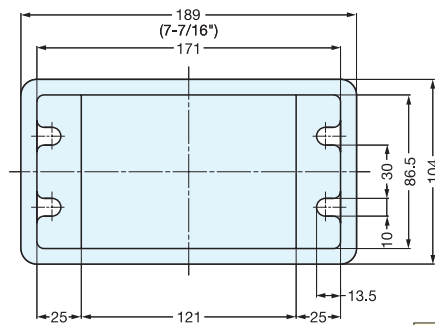
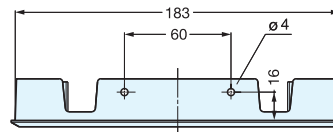
V2000



V2000/BLK



V 2000/WHT



Bore Dimensions

Please specify the finish when ordering.

Item No.	Weight (g)	Box (pcs)	Carton (pcs)	Material	Finish
V2000	102	33	330	Plastic	White (WHT), Black (BLK)

CABLE GROMMET

LSU, LS

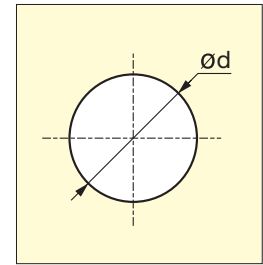
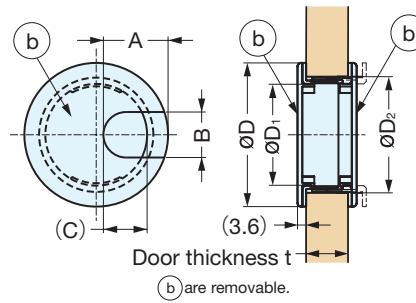
- Double-sided grommets.



LS60WHT



LS60BLK



Bore Dimensions

Item No.	Finish	Material	D	D ₁	D ₂	A	B	C	t	d	Weight (g)	Box (pcs)	Carton (pcs)							
LSU60WT	White	ABS	60 (2-3/8")	42.5 (1-43/64")	48.5	27	19	18	12~18 (1/2"~3/4")	48.5	19	20	160							
LSU60BL	Black								18~24 (3/4"~1")											
LS60WT	White								76 (3")		58.2 (2-19/64")	64.2	34	22	25.1	25~40 (1"~1-9/16")	64.2	25	12	96
LS60BL	Black																			

CABLE GROMMET

CHC

- Choose from 1/2" (12 mm) or 19/32" (15 mm) grommets, perfect for phone, fax, or LAN data cables.

Weight: CHC-18 8.3(g)
CHC-22 14.5(g)



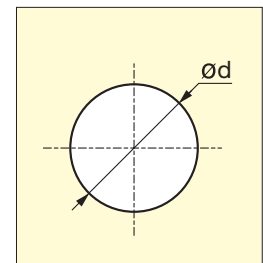
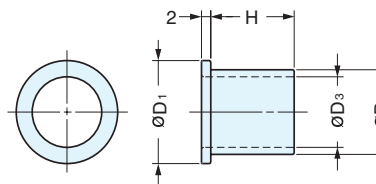
CHC-22/GB



CHC-18/NI



CHC-18/GA



Bore Dimensions

Item No.	Material	Finish	H	D ₁	D ₂	D ₃	d	Box (pcs)
CHC-18/NI	Brass	Satin Nickel	16 (5/8")	18 (11/16")	14 (9/16")	12 (1/2")	14.5 (9/16")	120
CHC-18/GA		Gold						
CHC-18/GB		Antique Brass						
CHC-22/NI		Satin Nickel	18 (11/16")	22 (7/8")	18 (11/16")	15 (19/32")	18.5 (11/16")	60
CHC-22/GA		Gold						
CHC-22/GB		Antique Brass						

CABLE GROMMET

LN72D



LN72D/WT

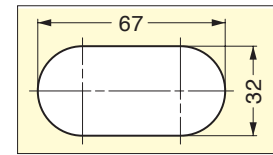
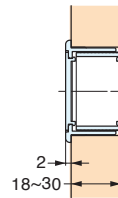
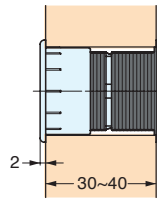
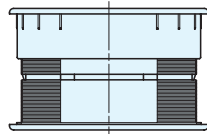
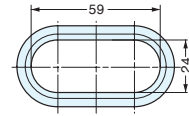
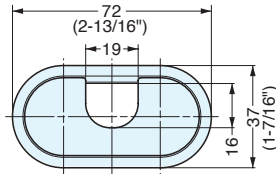


LN72D/BL



Cover Grommet

- Double-sided adjustable grommet
- For panel thickness 1-3/16" to 1-9/16" (30 to 40 mm); also for 11/16" to 1-9/16" (18 to 30 mm) by snapping off edge.
- Cover can be removed to increase the grommet opening.



Bore Dimensions

Item No.	Color	Material	Weight (g)	Box (pcs)	Carton (ocs)
LN72D/WT	White	ABS	19	40	320
LN72D/BL	Black				

CABLE GROMMET

LN72S

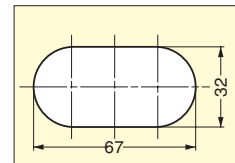
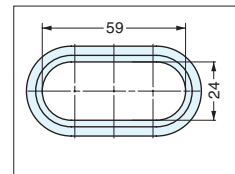
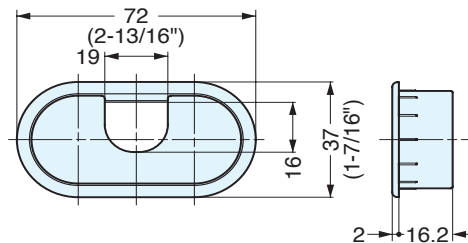


LN72S/WT



LN72S/BL

- Cover can be removed to increase the grommet opening.



Bore Dimensions

Item No.	Color	Material	Weight (g)	Box (pcs)	Carton (ocs)
LN72S/WT	White	ABS	8	40	200
LN72S/BL	Black				

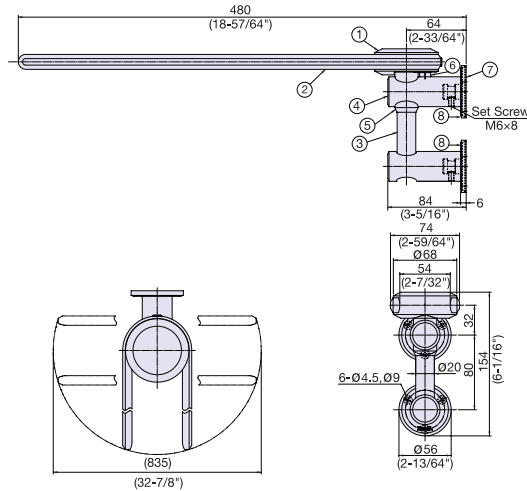
ZweiL Towel Bar



ZL-3201



- Supplied with stainless steel wood screw (4.1 x 32), anchor plug and 3 mm allen key.



Item No.	Weight (g)	Box (pcs)	
ZL-3201	-	1	
No.	Part Name	Material	Finish
①	Bracket	316 Stainless Steel	Zwei L
②	Arm		Mirror
③	Pin		Zwei L
④	Post	Polyacetal	Black
⑤	Bushing		Black
⑥	Swivel Stopper	316 Stainless Steel	Plain
⑦	Base Plate		Zwei L
⑧	Cover		Zwei L

MISCELLANEOUS

TOWEL BARS

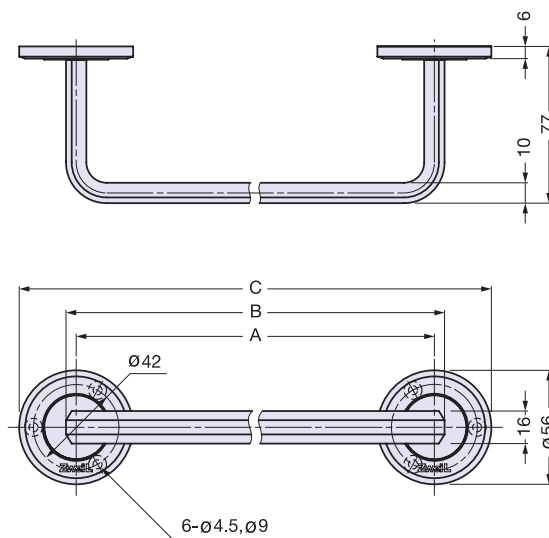
ZweiL Towel Bar



ZL-3202



- Supplied with stainless steel wood screws (4.1 x 25) and concrete anchor (for wood screw 4.1, ø6 mm hole).



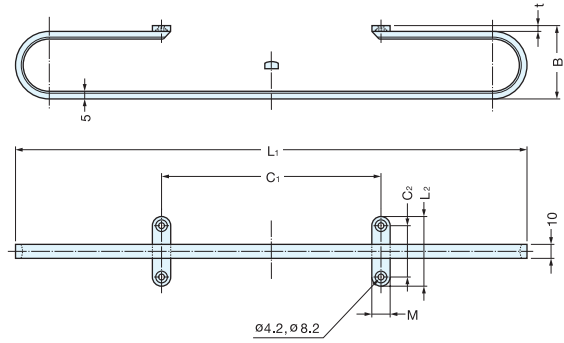
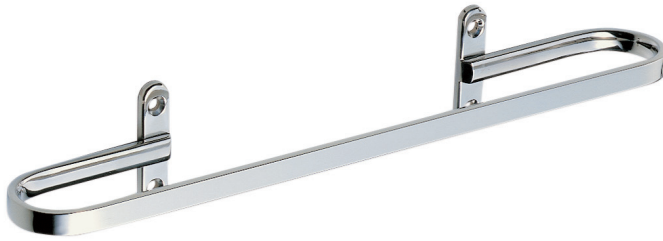
Item No.	Material	Finish/Color	A	B	C
ZL-3202-480	316 Stainless Steel	Zwei L	480	490	536 (21-7/64")
ZL-3202-640			640	650	696 (27-13/32")

TOWEL BAR



KB-T

- Supplied with 4 x 20 stainless steel wood screws.



Material	Finish
303 Stainless Steel	Mirror

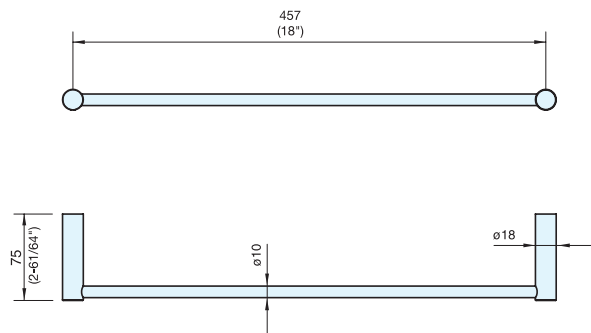
Item No.	B	C ₁	C ₂	L ₁	L ₂	M	t	Weight (g)	Box (pcs)	Carton (pcs)
KB-T-350	50	150	35	350 (13-25/32")	48	13	4	240	1	10
KB-T-450		250		450 (17-23/32")				275		

TOWEL BAR



DSR-01/18

- Supplied with screws, brackets, plastic expansion anchors and allen key.



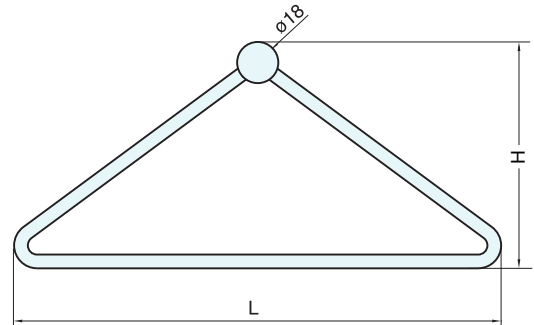
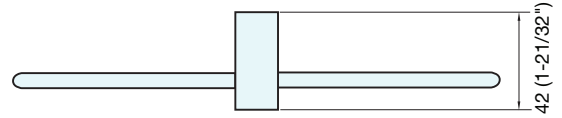
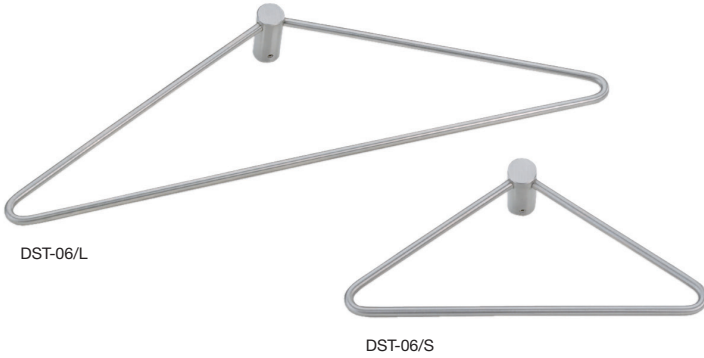
Item No.	Weight (g)	Box (pcs)	Carton (pcs)	Material	Finish
DSR-01/18	580	1	10	303/304 Stainless Steel	Satin

TOWEL BAR



DST-06

- Supplied with screw, bracket, plastic expansion anchor and allen key.



Item No.	L	H	Weight (g)	Box (pcs)	Carton (pcs)
DST-06/S	213 (8-25/64")	108 (4-1/4")	173	1	10
DST-06/L	390 (15- 3/8")	125 (4-15/16")	241		

Material	Finish
303/304 Stainless Steel	Satin

TOWEL BAR

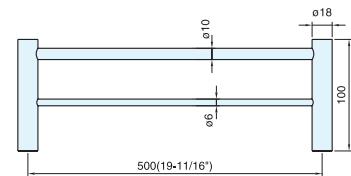


DSR-02

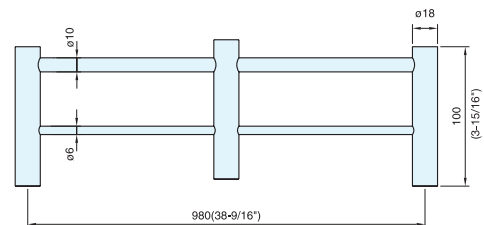
- Supplied with screws, brackets, plastic expansion anchors and allen key.



DSR-02/50



DSR-02/98



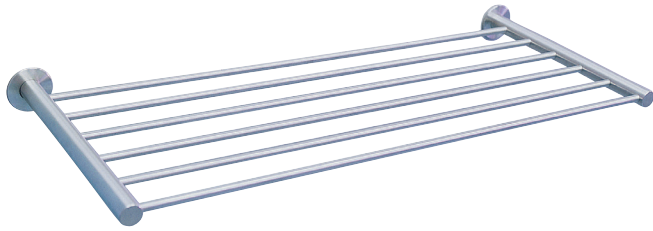
Item No.	Weight (g)	Box (pcs)	Carton (pcs)
DSR-02/50	777	1	10
DSR-02/98	1352		

Material	Finish
303/304 Stainless Steel	Satin

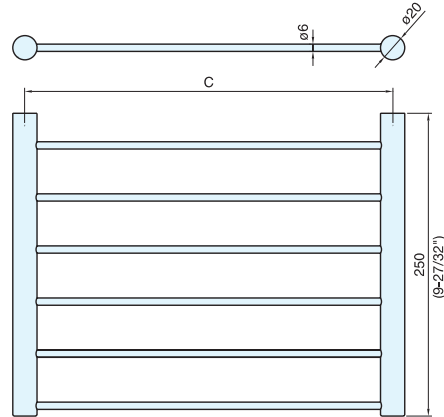
TOWEL RACK



DSR-08



- Supplied with screws, brackets, plastic expansion anchors and allen key.



Item No.	C	Weight (g)	Box (pcs)	Carton (pcs)	Material	Finish
DSR-08/45	450 (17-3/4")	1423	1	10	303/304 Stainless Steel	Satin
DSR-08/60	600 (23-5/8")	1778				

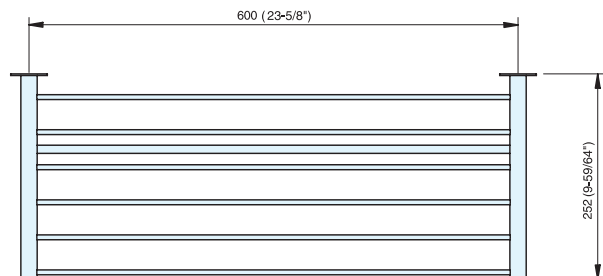
TOWEL RACK



DSD-80



- Supplied with screws, brackets, plastic expansion anchors and allen key.



Item No.	Weight (g)	Box (pcs)	Carton (pcs)	Material	Finish
DSD-80	2700	1	10	303/304 Stainless Steel	Satin

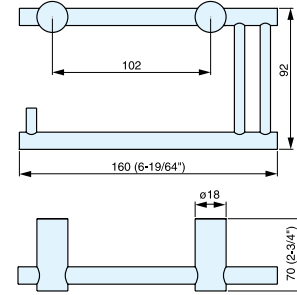
TOILET PAPER HOLDER



DSB-01



- Supplied with screws, brackets, plastic expansion anchors and allen key.



Item No.	Weight (g)	Box (pcs)	Carton (pcs)
DSB-01	456	1	10

Material	Finish
303/304 Stainless Steel	Satin

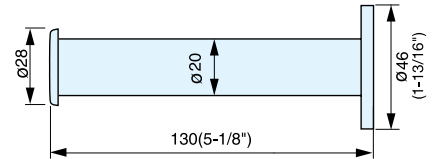
TOILET PAPER HOLDER



DSB-03



- Toilet paper holder for side-wall mount.
- Supplied with screw and plastic expansion anchor.



Item No.	Weight (g)	Box (pcs)	Carton (pcs)
DSB-03	201	5	50

Material	Finish
303/304 Stainless Steel	Satin

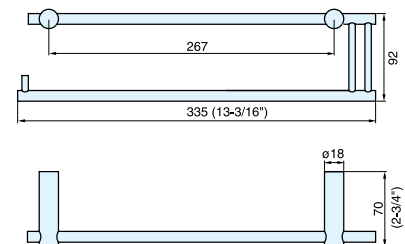
PAPER TOWEL HOLDER



DSB-04



- Paper towel holder, also can be used as towel bar.
- Supplied with screws, brackets, plastic expansion anchors and allen key.



Item No.	Weight (g)	Box (pcs)	Carton (pcs)
DSB-04	669	1	10

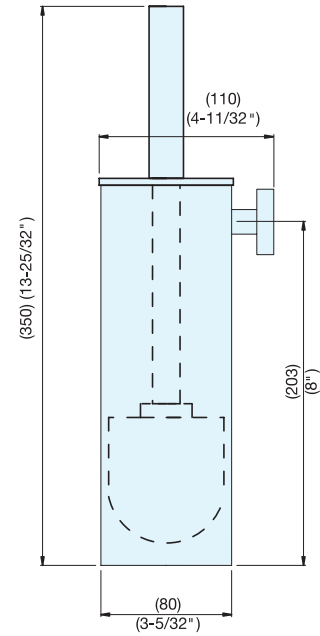
Material	Finish
303/304 Stainless Steel	Satin

TOILET BRUSH/HOLDER



DSB-09

- Removable plastic basket for easy cleaning.
- Supplied with screws, brackets, plastic expansion anchors and allen key.



Item No.	Weight (g)	Box (pcs)	Carton (pcs)
DSB-09	748	1	10

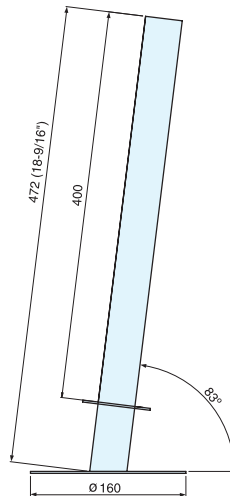
Material	Finish
303/304 Stainless Steel	Satin

TOILET PAPER HOLDER



DSB-07

- Toilet paper stand ideal to keep stock organized.



Item No.	Weight (g)	Box (pcs)	Carton (pcs)
DSB-07	1009	1	10

Material	Finish
304 Stainless Steel	Satin

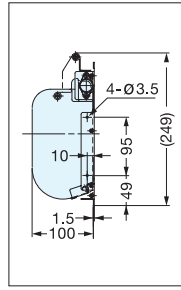
MULTI-PURPOSE DOOR (W/DAMPER)



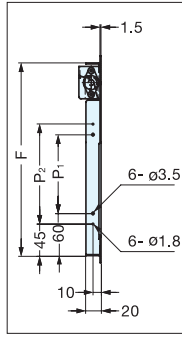
AZ-GD230/HL, AZ-SD310/HL



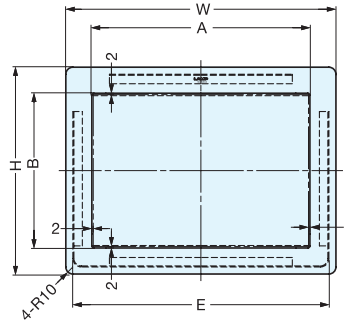
AZ-GD230/HL



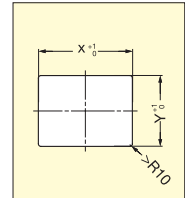
AZ-GD230/HL



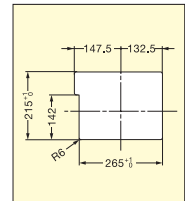
AZ-SD310/HL



- Soft and slow closing movement with a unique damper mechanism.
- Vertical use only.



Cut Out Dimensions
AZ-SD310/HL



Cut Out Dimensions
AZ-GD230/HL

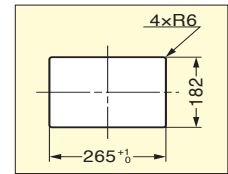
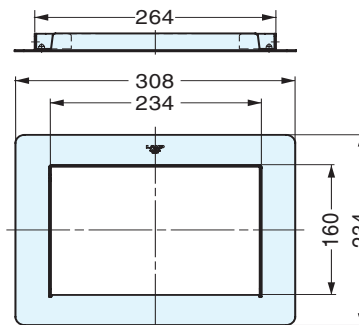
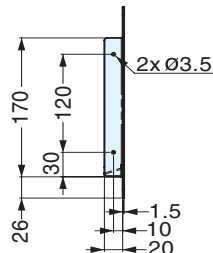
Material	Finish
304 Stainless Steel	Satin

Item No.	A	B	W	H	E	F	P ₁	P ₂	X	Y	Weight (kg)	Box (pcs)	Carton (pcs)
AZ-GD230/HL	234	160	308	234	-	-	-	-	-	-	1.5	1	10
AZ-SD310/HL	310	220	384	294	364	274	112	142	365	275	2.2		

MULTI-PURPOSE GROMMET



AZ-ND230



Cut Out Dimensions

Item No.	Weight (kg)	Box (pcs)	Carton (pcs)	Material	Finish
AZ-ND230	719	1	10	304 Stainless Steel	Satin

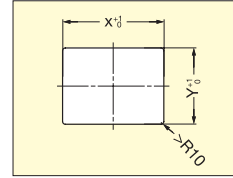
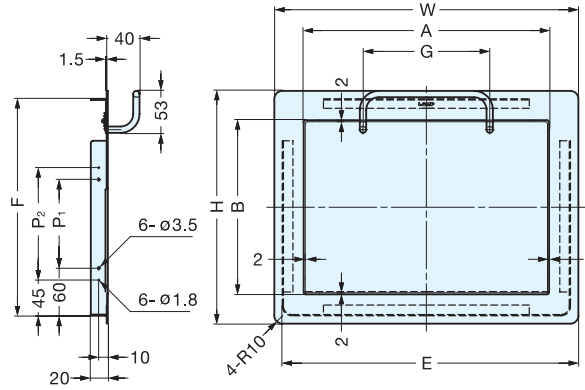
MULTI-PURPOSE DOOR (W/HANDLE)

STAINLESS 304 STEEL

AZ-HD230/HL, HD310/HL



- Easy to open with the handle.
- No need to put hands in trash.
- 304 Stainless Steel lid, frame and handle.
- Vertical use only.



Cut Out Dimensions

Material	Finish
304 Stainless Steel	Satin

Item No.	A	B	W	H	E	F	G	P ₁	P ₂	X	Y	Weight (kg)	Box (pcs)	Carton (pcs)
AZ-HD230/HL	234	160	308	234	288	214	120	60	90	289	215	1.8	1	10
AZ-HD310/HL	310	220	384	294	364	274	160	112	142	365	275	2.2		

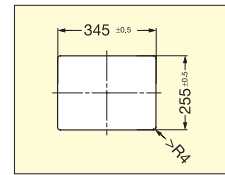
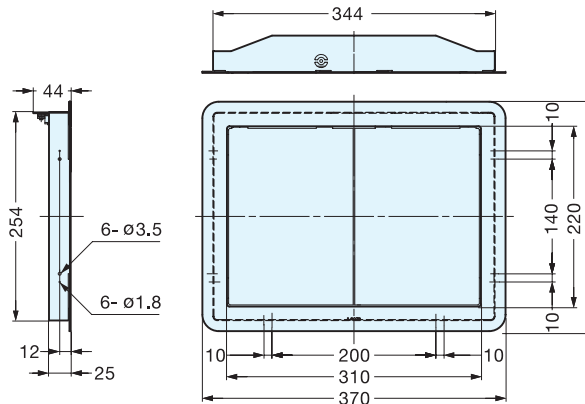
MULTI-PURPOSE DOOR (DOUBLE DOOR)

STAINLESS 304 STEEL

AZ-DD310/HL



- Synchronized doors allow for easy opening.
- 304 Stainless Steel lid and frame.
- Vertical use only.



Cut Out Dimensions

Item No.	Weight (kg)	Box (pcs)	Carton (pcs)	Material	Finish
AZ-DD310/HL	2.2	1	10	304 Stainless Steel	Satin

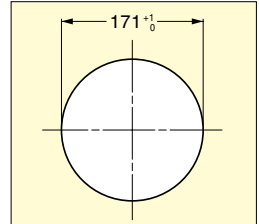
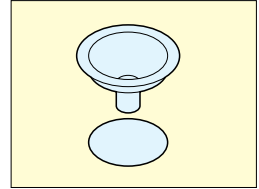
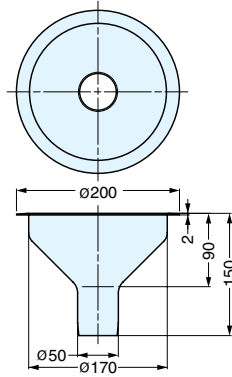
DRAIN SPOUT

STAINLESS
304
STEEL

AN-DH020



- Wide 6-11/16" diameter drain spout for use in food service environments.
- Lip outer diameter 7-7/8".
- Stainless steel construction for easy cleaning.
- 2" diameter tubing can be attached to the spout.



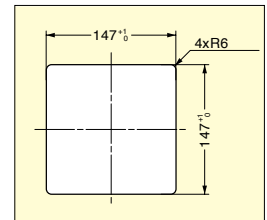
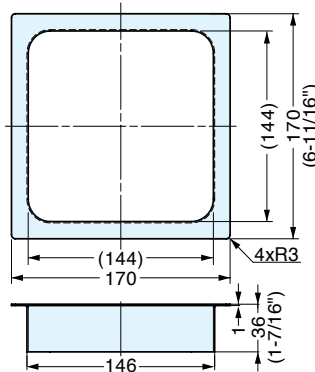
Cut Out Dimensions

Item No.	Weight (g)	Box (pcs)	Carton (pcs)	Material	Finish
AN-DH020	490	1	10	304 Stainless Steel	Polished Mirror/Satin

MULTI-PURPOSE GROMMET

STAINLESS
304
STEEL

AN-KH017



Cut Out Dimensions

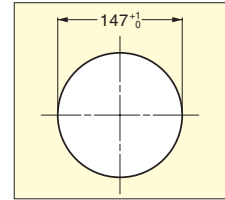
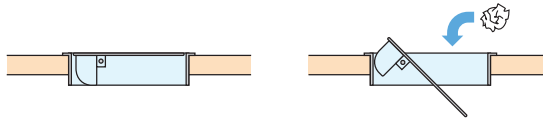
Item No.	Weight (g)	Box (pcs)	Carton (pcs)	Material	Finish
AN-KH017	269	1	10	304 Stainless Steel	Satin

MULTI-PURPOSE LID

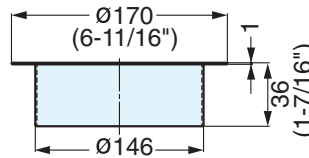
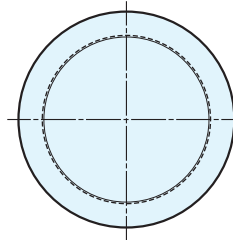
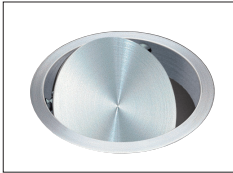
STAINLESS
304
STEEL

AD-DH017

- Self-leveling lid.
- Horizontal use only.



Cut Out Dimensions



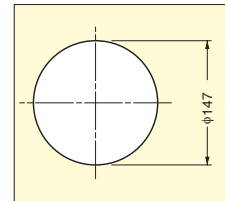
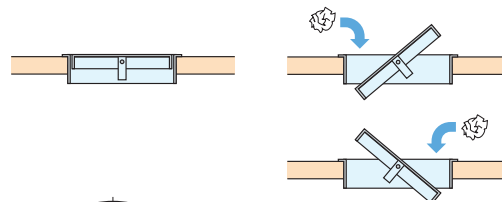
Item No.	Weight (kg)	Box (pcs)	Carton (pcs)	Material	Finish
AD-DH017	977	1	10	304 Stainless Steel	Satin

MULTI-PURPOSE LID

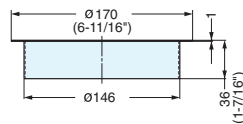
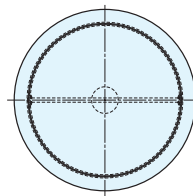
STAINLESS
304
STEEL

AD-DH015

- Self-leveling lid.
- Horizontal use only.



Cut Out Dimensions



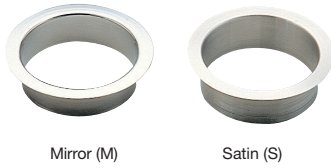
Item No.	Weight (kg)	Box (pcs)	Carton (pcs)	Material	Finish
AD-DH015	554	1	10	304 Stainless Steel	Satin

MULTI-PURPOSE GROMMET

STAINLESS
304
STEEL

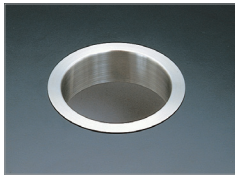
AN-DH, LH

- Stainless steel construction, available with mirror (-M) or satin finish (-S).

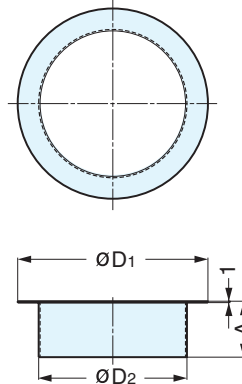


Mirror (M)

Satin (S)



Installation



Material	Finish
304 Stainless Steel	Satin (S)/Mirror (M)

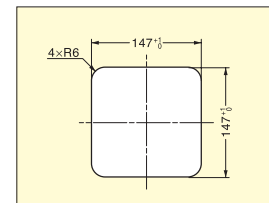
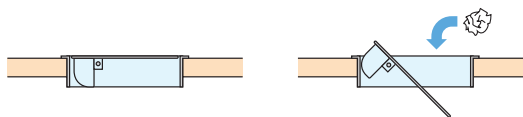
Item No.	A	D ₁	D ₂	Weight (kg)	Box (pcs)	Carton (pcs)
AN-DH001	36 (1-7/16")	112 (4-7/16")	82 (3-1/4")	102	1	10
AN-DH011	40 (1-9/16")	136 (5-3/8")	106 (4-3/16")	187		
AN-DH015	36 (1-7/16")	170 (6-11/16")	146 (5-3/4")	233		
AN-LH001	22 (7/8")	112 (4-7/16")	82 (3-1/4")	79		
AN-LH011		136 (5-3/8")	106 (4-3/16")	95		
AN-LH015		170 (6-11/16")	146 (5-3/4")	125		

MULTI-PURPOSE LID

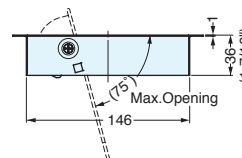
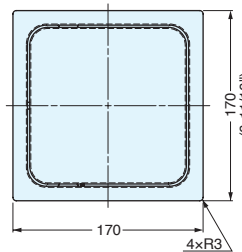
STAINLESS
304
STEEL

AD-KH017

- Self-leveling lid.
- Horizontal use only.



Cut Out Dimensions



Item No.	Weight (kg)	Box (pcs)	Carton (pcs)	Material	Finish
AD-KH017	967	1	10	304 Stainless Steel	Satin